








DELTA Layflat Hose



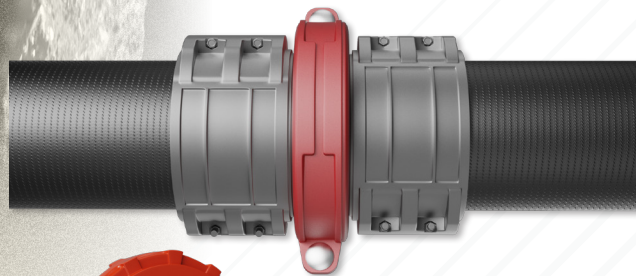
The most innovative technology through-the-weave extruded large-diameter TPU hose. Application includes water transfer widely used for the oil and gas sector, remote water supply for municipal fire fighting, flood and dewatering applications for municipalities, and construction rental companies. TPU hose has the advantages of high pressure, more abrasion resistant, low expansion rate, hydrolysis resistant, UV, ozone, fungus and weather resistant. Maximum unit length can be 1300 feet, but stock 660 foot sections. Offered in both anodized aluminum and stainless steel field attachable Victaulic ends. Designed for easy deployment and retrieval, saving time and labor costs. It is the best solution for water transfer applications.

- ▶ **PRODUCTION PROCESS:** *Through-The-Weave Extruded*
- ▶ **LAYLINE:** *Primus Hose 200PSI W.P.*
- ▶ **EXPANSION RATE:** ≤ 10%
- ▶ **ELONGATION RATE:** ≤ 2%
- ▶ **TEMPERATURE:** -50° F to +158° F

Part Number	 I.D. (inch)	 Tensile Strength (Lbs.)	 Tube Thickness (inch)	 Working Pressure (PSI)	 Burst Pressure (PSI)	 Reinforcement	 Lbs./Ft.
AH-12-TPU-660FT-D-A*	12"	163,803 Lbs	0.149" ± 0.0078"	200 PSI	550 PSI	Polyester	2.82 Lbs/Ft
AH-12-TPU-660FT-D-SS**							
AH-14-TPU-660FT-D-A*	14"	203,045 Lbs	0.161" ± 0.0078"	150 PSI	450 PSI	Polyester	3.53 Lbs/Ft
AH-14-TPU-660FT-D-SS**							

* Aluminum Ends ** Stainless Steel Ends

ACCESSORIES



Part Number	Description
AH-12-FV-A-4	Hose End Aluminum
AH-12-FV-CLAMP	Hose Clamp Aluminum
AH-12-FV-SS-4	Hose End SS
AH-12-VIC-CLAMP-STD	Hose Clamp
AH-12-VIC-CLAMP-Q	Hose Clamp